

TECHNICAL SPECIFICATIONS



Engine

Engine Model	YANMAR 4TNV94L
Number of Cylinders	4
Max. Torque/Speed	198N·m/1400rpm
Displacement	3.054L



Hydraulic system

Max. Main Pump Flow	159L/min
Main Safety Valve Pressure	24.5MPa



Main Performance

Bucket Digging Force	50kN
Arm Digging Force	31kN
Max. Traction Force	49.4kN
Max. Walking Speed	4.2km/h
Min. Walking Speed	2.4km/h
Rotary Speed	11r/min
Gradeability	35°
Ground Pressure	32.33kPa



Oil Capacity

Fuel Tank	120L
Hydraulic Tank	90L
Engine Oil	5.5-10.5L



LOVOL CONSTRUCTION MACHINERY GROUP CO., LTD.

Address: No. 75, Huanghe East Road, Huangdao District, Qingdao City, Shandong Province, China.

Website: en.lovol.com

Alibaba: lovolconstruction.en.alibaba.com

Facebook: Cons Lovol

E-mail: lovol_overseas@global.lovol.com

TEL: +86-532-86907190

As manufacturer, LOVOL has right to constantly upgrade and improve our products without informing to customers.
The pictures in literatures are for reference only, the detailed specifications are subject to real products.



Rated Power

36.2kW/2100rpm

Operating Weight

5730kg

Bucket Capacity

0.23m³

FR60E2-H

EXCAVATOR



RELIABILITY

Superb Match

The key parts of the power system, hydraulic system and electronic control system are specially customized to achieve perfect matching and compatibility with one another, which deliver maximum reliability and longer service life.

Core Components

Relying on the R&D system of LOVOL Japan Engineering Center, LOVOL has established a solid partnership with world-renowned companies to continuously optimize and improve the quality and service life of our key components. Industry leading components are used on our machines including engine, pump, valve, motor, oil cylinder, controller and forth.

Reinforced Working Device

The front and rear support of boom and front support of arm are made of cast steel, which effectively reduces concentration of stress and increases the service life dramatically. The arm is also reinforced to improve the durability.



PRODUCTIVITY

Superb Match

Each component in powertrain system, such as engine, gear, rotary motor, working pumps and hydraulic cylinder are specially customized to achieve perfect match with one another, making the whole system features more reliable.

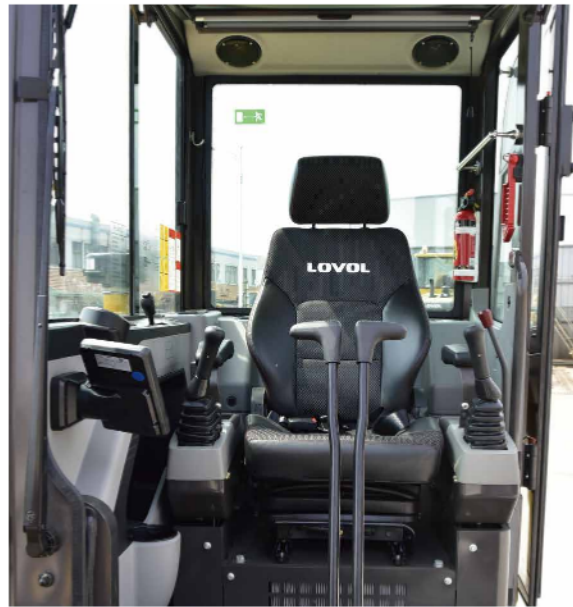
Outperformance

Utilize latest technology and hydraulic system, through the optimization of engine, main pump and main valve, the response of whole system is much faster.

Great Digging Force

On the premise of ensuring static digging force, LOVOL dedicate to the research of dynamic digging force. The system will automatically detect the pressure when face big frustration during digging, and automatically adjusts output pressure to keep the powerful force in digging process.

COMFORT



Large Spacious Cab

Equipped with spacious cab which provides operator large space to operate machine. The premium suspension seat with armrests is very comfortable and it can reduce the working fatigue dramatically. Big LCD screen is easy to read all data and to operate when working. Air conditioning is added for maximum comfort.

Ergonomic Design

The proportional joystick delivers sensitivity, accuracy and smoothness during operation. This joystick is specially designed to meet different operating conditions. Intelligent control system is standard which could control diverse attachments such as bucket, hammer, scarifier and hydraulic scissors.

Low Noise and Low Vibration

In order to reduce work fatigue and improve productivity, the noise inside of cab has been controlled to the lowest level. The cab is attached to the frame with buffer that dampens vibrations and sound levels to enhance operator comfort.

SERVICEABILITY



Engine Hood and Panels

The large engine hood enlarges maintenance space for operator to check and maintain the engine. The tool box is big with big opening angle which can put grease bucket and special tools easily. One key can open all locks of machine, it is very convenient for the operator.

Electric and Hydraulic Parts

Pressure sensor is used on the main pump which can monitor hydraulic system's pressure when working. Centralized lubrication makes convenient and easy maintenance to slewing bearing, and the radiator is optimized for easy cleaning. These configurations routine maintenance machines easy and convenient.

Filters and Maintenance Period

All the filters are fixed at ground level position, it is very convenient to do routine maintenance. The maintenance interval is also extended to save time and cost.

INCREASE YOUR PRODUCTIVITY AND PROFIT WITH LOVOL ATTACHMENTS

You can easily expand the performance of your machine by utilizing any of the variety of LOVOL Attachments. Each LOVOL Attachments is designed to fit the weight and horsepower of LOVOL Excavator for improved performance, safety, and stability.



Log Grapple



Trenching Bucket



Hydraulic Rammer



Quick Coupler



Hydraulic Hammer



Standard Bucket



STANDARD CONFIGURATION

Engine

4-stroke water-cooled direct injection
Radiator with protective fence
Air Pre-filter
Air intake heater
Fan guard

Cab

Cigarette lighter
Seat belt
Shade plate
Storage compartment
Emergency hammer
Air conditioner
Audio speaker
Shock absorber
Flexible aerial
Radio
Hydraulic safety locking rod
Sun proof safety glass
Cab floor mat
Pull-up front window
Dismountable lower windshield
Sun shade window
Windshield wiper
Skylight window
Cup holder

Hydraulic System

Automatic hydraulic system (flow confluence system)
Multistage filtration system
Cylinder buffer device
Auxiliary hydraulic valve
Dual-speed travel motor
Anti-slope turning device
Waste oil drainage pipeline
Hydraulic oil regeneration
Boom holding valve

Electronic Control System

12V power battery
Monitor brightness adjustment
Maintenance tips
Safe stop & start function
Master switch
Engine start protection
Multilingual display
Cab ceiling light

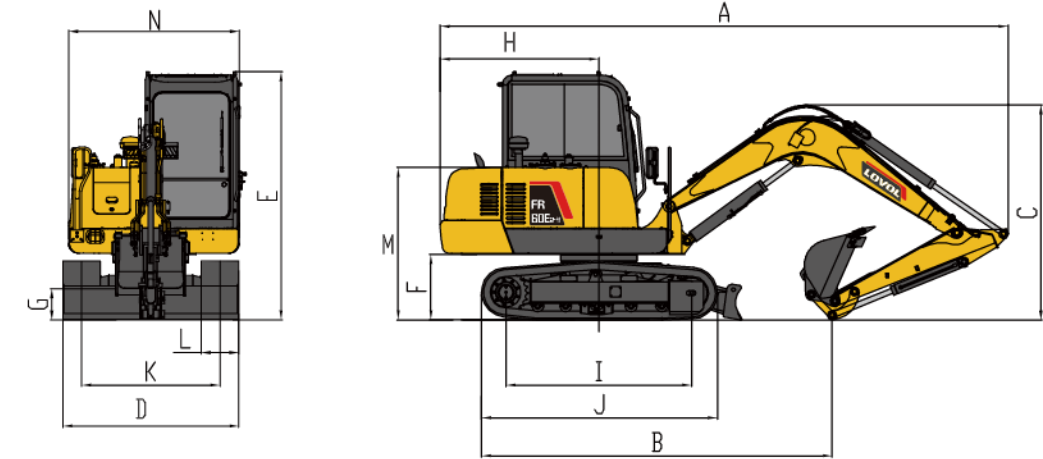
Swing Platform

Toolbox
Large handrail
Bottom guard plate

Chassis

Fixed chassis
400mm triple tooth track plate

TECHNICAL SPECIFICATIONS



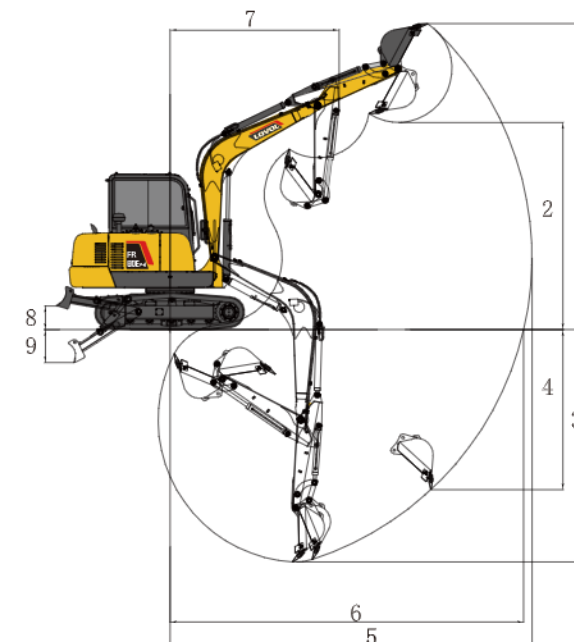
Working Range

Max. Digging Height	1	5405mm
Max. Dumping Height	2	3770mm
Max. Digging Depth	3	3660mm
Max. Vertical Digging Depth	4	2655mm
Max. Digging Radius	5	6065mm
Max. Ground Digging Radius	6	5925mm
Min. Turning Radius	7	2660mm
Dozer Blade Lifting Height	8	400mm
Dozer Blade Falling Height	9	560mm



Dimensions

Shipping Length	A	6090mm
Shipping Ground Length	B	3760mm
Boom Height	C	2300mm
Shipping Width	D	1950mm
Cab Height	E	2660mm
Ground Clearance of Counter Weight	F	700mm
Min. Ground Clearance	G	330mm
Tail Turning Radius	H	1700mm
Wheel Tread	I	2010mm
Track Length	J	2550mm
Track Gauge	K	1480mm
Track Shoe Width	L	400mm
Hood Height	M	1635mm
Rotary Platform Width	N	1830mm



Other Specifications

Boom Length		3100mm
Arm Length		1500mm
Track Section Number (each side)		40
Track Roller Number		5
Dozer Blade Height		360mm